

Extronics Advance

Product Catalogue

22 September 2016



Table of Contents

Tags	3
T2 Tags	3
T3 Tags	6
T5 Sensor Tags	7
T7 Tags	9
T12 Tags	9
Tag Drop Box.....	9
Tag Mounting Accessories	10
Tag Replacement Parts	16
Wireless Connectivity	19
Hazardous Area Wi-Fi	19
Exciters.....	20
Exciters.....	20
Exciter Power Adapters.....	22
Exciter Mounting Accessories.....	23
Hardware Management.....	24
Software.....	25
Location Engine.....	25
MobileView Platform Licenses.....	26
MobileView Application Licenses	27
Evaluation and Development Kits.....	29
Basic Packages	29
IP Relays	30
Revision control	31



Extronics manufacture all hazardous area certified AeroScout products. These products carry Extronics branding. Non-certified AeroScout products continue to be manufactured by STANLEY Black & Decker, and so carry either STANLEY Healthcare or AeroScout branding. There are no changes to the technical specification of any of the products.

Please contact marketing@extronics.com if you have further questions.

Tags

T2 Tags



T2 Tag

TAG-2000

TAG-2000-INBH (no battery, no housing)

Wi-Fi Tag with low frequency (LF) receiver. Includes ½ AA Lithium battery and motion sensor.



T2 Tag with Call Button

TAG-2000-C

Wi-Fi Tag with low frequency (LF) receiver. Includes ½ AA Lithium battery, motion sensor and call button.





T2-EB Industrial Tag

2000-EB

Wi-Fi Tag with low frequency (LF) receiver. Includes AA Lithium battery, motion sensor, industrial housing, and mounting flanges.



T2s Small Form Factor Tag

TAG-2310

Wi-Fi Tag with low frequency (LF) receiver. Small form factor Tag for mounting on small assets or wearing on a person's wrist. Includes ½ AA Lithium battery and motion sensor.



T2s Small Form Factor Tag with Call Button

TAG-2310-C

Wi-Fi Tag with low frequency (LF) receiver. Small form factor Tag for mounting on small assets or wearing on a person's wrists. Includes ½ AA Lithium battery, motion sensor and call button.



T2 Intrinsically Safe Tag – iTAG100 series

iTAG100-1/iTAG100-1-CB (ATEX Zone 1 Group IIC)
iTAG100-3/iTAG100-3-CB (ATEX Mining Group I)
iTAG-MSHA/iTAG-MSHA-CB (MSHA certified)
iTAG100-5/iTAG100-5-CB (FM certified)
iTAG100-6/iTAG100-6-CB (ATEX Zone 0 Group IIB)
iTAG100-7/iTAG100-7-CB (MET Canada Certified)



Wi-Fi Tag with low frequency (LF) receiver. Includes ½AA Lithium battery and motion sensor.

iTAG100-x-CB versions also include a call button.

-1: ATEX and IECEx certified, Zone 1 Group IIC tag, certification code II 2G Ex ia IIC T6...T4 Gb

-3: ATEX and IECEx Mining Group I Tag, certification code 1 M1 Ex ia I Ma

-MSHA: MSHA (US Mine Safety and Health Administration) certified

-5: FM certified, Class I, II, III Div 1 Groups A-G T4, T5, T6

-6: ATEX Zone 0 Group IIB Tag, certification code II 1 G Ex ia IIB T6...T4 Ga

-7: MET Canada Certified: Class I Zone 0 Ex ia IIB T4,T5,T6 Ga



T3 Tags



T3 Tag

TAG-3000
TAG-3000-NEC1 (for NESIC Japan)

Wi-Fi Tag with low frequency (LF) receiver.
Includes 3.6V Lithium battery, 2 call buttons,
motion sensor and short tamper proof switch.
Does not include mounting flanges.



T3 Tag with Single Mounting Flange

TAG-3000-F1

Wi-Fi Tag with low frequency (LF) receiver.
Includes 3.6V Lithium battery, 2 call buttons,
motion sensor and short tamper proof switch.
Includes one mounting flange for screws or strap.



T3 Tag with Dual Mounting Flanges

TAG-3000-F2

Wi-Fi Tag with low frequency (LF) receiver.
Includes 3.6V Lithium battery, 2 call buttons,
motion sensor and short tamper proof switch.
Includes two mounting flanges for screws or strap.



T3i 5V Integration Tag

TAG-3100

Wi-Fi Tag with low frequency (LF) receiver.
Includes tag board (no housing) for embedding
into devices. Can accept up to 5V input (does not
include battery).



T5 Sensor Tags



T5a Temperature Tag

TAG-5100

TAG-5100-NIST100 (3 Point NIST - Traceable Calibration Certificate)

TAG-5100-POT (includes potting container with lid and glass beads)

Wi-Fi Tag with low frequency (LF) receiver. Includes ½ AA Lithium battery, motion sensor, and on-board temperature sensor. Temperature range -30 °C to +75 °C (-22 °F TO +167°F). Includes a mounting cradle.



T5b Temperature Tag

TAG-5110 (Includes 2m Cable)

TAG-5111 (Includes 3m Cable)

TAG-5112 (Includes 15m Cable)

TAG-5110-NIST100 (3 Point NIST - Traceable Calibration Certificate, Includes 2m Cable)

TAG-5111-NIST100 (3 Point NIST - Traceable Calibration Certificate, Includes 3m Cable)

Wi-Fi Tag with low frequency (LF) receiver. Includes AA Lithium battery, motion sensor and external temperature sensor probe with cable. Includes mounting accessories and 50ml plastic pot for immersing probe in liquid. Sensor temperature range is: -60 °C to +140°C (-76°F to +284°F).





T5c Temperature Tag

TAG-5120

TAG-5120-NIST100 (3 Point NIST - Traceable Calibration Certificate)

TAG-5121-NIST100 (with 4m cable and 3 Point NIST - Traceable Calibration Certificate)

Wi-Fi Tag with low frequency (LF) receiver. Includes AA Lithium battery, motion sensor and external temperature sensor probe with 2m cable. Includes mounting accessories and 50ml plastic pot for immersing probe in liquid. Sensor temperature range is: -200 °C to +140°C (-328°F to +284°F).



T5h Humidity Tag

TAG-5200

TAG-5200-NIST100 (3 Point NIST - Traceable Calibration Certificate)

Wi-Fi Tag with low frequency (LF) receiver. Includes ½ AA Lithium battery, motion sensor, on-board humidity sensor (5%-95% RH) and temperature sensor (-30 °C to +75 °C with ±1°C accuracy/-22 °F TO +167°F). Includes a mounting cradle.



T5m-v Multi-Sensor Tag

TAG-5400

Wi-Fi Tag with low frequency (LF) receiver. Includes AA Lithium battery, motion sensor, 3 meter power cable, on-board humidity sensor (5%-95% RH), voltage sensor (2.5V to 30V at 0.5V accuracy) and temperature sensor (-30 °C to +75 °C with ±1°C accuracy / -22 °F TO +167°F).



T7 Tags



T7a Autoclave Tag

TAG-7000

Sterilisable Wi-Fi Tag that withstands ultrasonic and autoclave cleaning cycles at temperatures up to 135°C (275 °F). Water proof - IP68 rated including a replaceable battery.

T12 Tags



T12 Bi-Directional Tag

TAG-1200-T

TAG-1200-CT (includes call button)

A Bidirectional, 802.11b/g/n Wi-Fi Asset Tag with low frequency (LF) receiver. The tag includes tamper proof switch and an optional call button.

Tag Drop Box



Tag Drop Box

DRBX-1000

DRBX-2000 (includes embedded EX3210 exciter)

Tag Drop Box with Ethernet Interface for EX3210 Exciter for deactivating and storing used tags.



Training

Tag Battery Replacement Training

L030006

Tag Battery Replacement Training

Battery Replacement Training

- Half a day training
- Remote sessions available on skype or webex
- Max of 3 people per session

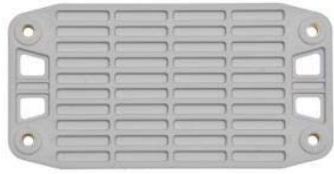
Mobile View Training

PDP-100

MobileView API training and resources pack

Includes remote developer training on the MobileView APIs, quick start code samples, and integration design advice and integration development support. Limited to up to 8 hours of total AeroScout time. Design and code must be reviewed by AeroScout to validate.





Mounting Plate for T2 EB and T5m-v Tag,
50Pack

TAC-018

Mounting plates for the T2-EB Industrial Tag and the T5m-v Tag. Pack includes 200 screws.



T2, T5a and T5h Tag Mounting Cradle,
50-Pack

TAC-250

TAC-250R (red version)

For screw or strap mounting to assets for the solid back T2 and T5 tags.



T3 Tag Mounting Cradle, 50 Pack

TAC-310

For screw or strap mounting to assets, includes 50 long tamper switches and cradles.



T2s Tag Mounting Cradle, 50 Pack

TAC-255

For screw or strap mounting of T2s Tags to assets.





Tag Badge Clip, 20-Pack

TAC-210

Suitable for T2 and T3. Requires Mounting Bracket for Badge Clip/Lanyard (TAC-270) for T2 Tags and single or dual flange for T3 Tags. Pack of 20.



T2 Tag Badge Clip Mount

TAC-270

Mounting bracket for employee badge clip or lanyard for T2 Tag. Pack of 20. (Note: requires new T2 Tag back flange design).



T2s Tag Badge Clip Mount

TAC-280

Mounting bracket for employee badge clip or lanyard for T2s Tag. Pack of 20.



T2 Tag Belt Clip & Cradle, 20-Pack

TAC-082

T2 Tag belt clip and compatible cradle.





T3 Tag Belt Clip & Cradle, 20-Pack

TAC-083

T3 Tag belt clip and compatible cradle. Pack of 20.



T2s Tag Belt Clip & Cradle, 20-Pack

TAC-085

T2s Tag belt clip and compatible cradle.



T12 Cradle, 50-Pack

TAC-120

For Screw or strap mounting of T12 Tags to assets. Screws can be ordered under TAC-065. Long tamperers TAC-340 are to be used with this cradle. 50-Pack.



T2 Tag Wrist Straps, 50-Pack

TAC-220

Suitable for T2 Tags attachment to the wrist.





Velcro Attachment Kit, 50-Pack

TAC-030

Velcro patches.



300/110MM Velcro Strap for Tag Mounting, 20-Pack

TAC-035 (300 mm)

TAC-036 (110 mm)

Pack of 20 Velcro straps for T2/T3/ T5a Tags. 300/110MM in length. Can be used for mounting on rear view car mirrors and other assets.



Tape Attachment Kit, 50-Pack

TAC-031

Double-sided adhesive tape patches.



T3 Tag Tape Attachment Kit, 20-Pack

TAC-350

Double-sided adhesive tape patches for T3 Tags. Can be used to mount a T3 Tag to laptops or other flat surface.





T3 Tag Long\Short Tamper Switches, 100Pack

TAC-340 (Long switches)
TAC-341 (Short switches)
TAC-342 (Extra Long switches)

Tamper switches for T3 Tags. Includes 100 switches. The short switch is used with or without a cradle. The long switch is used with the T3 mounting cradle. The extra-long switch is used when the cradle is fixed using an adhesive double-sided tape patch (TAC-350).



Screw Kit for Tag Mounting

TAC-065

Screw set for tag mounting. Includes 100 units. Can be used for directly mounting T3 Tags or for mounting the T2 and T3 cradle.



Tag Replacement Parts



T2, T2-X3 Intrinsically safe, T2-X4 Intrinsically safe, T2u, T5a and T5h Tag Battery Pack,
25/50-Pack

TAC-230 (25-pack)

TAC-231 (50-pack)

½ AA 3.6V Lithium batteries for T2, T2-X3 Intrinsically safe, T2-X4 Intrinsically safe, T2u, T5a and T5h Tags.



Intrinsically safe T2-X1, T2-X2, T2-X5, T2-X6 and T2-X7 replacement batteries, 10-Pack

IND-TAC-246 (TAG2000 X1, X2, X6, CX1, CX2, CX6 ATEX / IECEx Tags)

IND-TAC-247 (TAG2000 X5, CX5 FM Tags)

IND-TAC-248 (TAG2000 X7, CX7 MET Tags)

½ AA 3.6V Potted Replacement Battery Leaded type T2 batteries for Intrinsically safe T2 tags.
Note: for X3 and X4 Intrinsically safe tags, use standard T2 replacement batteries.

Warning: Intrinsically Safe T2 tag battery replacement must only be performed by personnel approved by Extronics.



T2-EB, T5b, T5c and T5m-v Tag Battery Pack, 5/10/25/50-Pack

TAC-241 (50-pack)

TAC-242 (25-pack)

TAC-243 (10-pack)

TAC-244 (5-pack)

3.6V AA Lithium batteries for T2-EB, T5b, T5c and T5m-v Tags with soldering wires.





T2s Tag Battery Pack, 25/50-Pack

TAC-232 (25-pack)

TAC-233 (50-pack)

1/2 AA 3.6V Lithium batteries for T2s Tags with custom soldered wires.



T3 Tag Battery Pack, 25/50-Pack

TAC-330 (25-pack)

TAC-331 (50-pack)

TAC-330-NEC1 (25-pack) (for NESIC Japan)

TAC-331-NEC1 (50-pack) (for NESIC Japan)

3.6V Lithium batteries for T3 Tags.



T3 Tag Battery Removal Tool

TAC-345

Battery removal tool for all models of T3 Tags. Included in every 100 T3 Tag shipment.

T3 Tag Battery Sealing Ring 20-Pack

TAC-315

Pack of 20 T3 Tag Battery sealing rubber rings for replacement.

T12 Tab Batteries 25/50-Pack

TAC-437

TAC-438

3V Lithium (CR123A) batteries for T12 Tag.





Potting Container for T5a Tag and Glass Beads

TAC-500 (20-pack)
TAC-501 (Single)

Potting Containers for T5a Tags and Glass Beads. Includes container with lid and glass beads.



Replacement Pot for T5b and T5c Tag Probes, 10- Pack

TAC-510

Plastic pot for T5b and T5c Tag probes. Includes pierced lid and rubber grommet. Does not include all the other mounting kit components.

Replacement Probe for T5b and T5c Tags

TAC-511 (for T5b tags)
TAC-512 (for T5c tags)

Includes only the Tag replacement probe, a 2m cable, and SMA connector. Does not include tag and mounting package.

T5b probe 80mm length, 6mm diameter.

T5c probe 160mm length, 6.35mm diameter.

Replacement Mounting Bracket for T5b and T5c Tag Probe Pots, 10-Pack

TAC-514

Plastic mounting bracket for temperature probe pots (TAC-510). Does not include all the other mounting kit components. 10-Pack.



Wireless Connectivity

Hazardous Area Wi-Fi



iWAP107 Universal Access Point Enclosure

This is a configured product – for full product code, please refer to the datasheet on www.extronics.com

ATEX and IECEx Zone 1, Class I, II, Div 1/Zone 1 certified.

Use equipment from leading WLAN vendors in hazardous areas, including intrinsically safe RF outputs for use of simple apparatus antennas. Available in a huge variety of options to suit your application and environment.



iWAP200 Universal Access Point Enclosure

This is a configured product – for full product code, please refer to the datasheet on www.extronics.com

ATEX and IECEx Zone 2 certified.

Use equipment from leading WLAN vendors in hazardous areas, including intrinsically safe RF outputs for use of simple apparatus antennas. Available in a huge variety of options to suit your application and environment.



iANT2xx series of antennas

This covers a large range – for individual product codes, please refer to the datasheet on www.extronics.com

All fully assessed as simple apparatus by Extronics engineers, suitable for use with the iWAP107 and iWAP200.

Available in a variety of frequencies and styles to suit your application.



Exciters

Exciters



EX2000B Exciter

EX-2000B

Indoor/outdoor Exciter (up to 6m/20' range). Includes Ethernet interface and a fixed mounting bracket. Powering options include PoE or external 48VDC power supply (not included).



iCITE10x Hazardous Area Exciter series

iCITE100-M (Master, ATEX and FM US approval)
iCITE100-S (Slave, ATEX and FM US approval)
iCITE100-M-E (Master, MET Canada certified)
iCITE100-S-E (Slave, MET Canada certified)
iCITE100-M-B (Master, ATEX and IECEx certified)
iCITE100-S-B (Slave, ATEX and IECEx certified)
iCITE100-S-B-F (Slave, ATEX and IECEx certified, with factory Ethernet configuration option)

Explosion proof Exciter in rugged enclosure, Ethernet interface, 24VDC, 24VAC, PoE (does not include power supply).

ATEX/IECEx certification: II 2 G Ex emb IIC T4.

FM US certification: Class 1, Division 2 Groups A,B,C,D ,T4, and Class 1, Zone 1 AEx em IIC T4 -20°C to +60°C

MET Canada certification: Class I Division 2 Groups A,B,C,D T4 -30°C to +60°C





EX2000B-R Rugged Exciter

EX-2000B-R

EX-2000B-RH (NEMA enclosure without Exciter)

EX-2000B Exciter for outdoor environments in rugged NEMA enclosure. (Power supply and wall/pole mount not included).



EX3210 Exciter

EX-3210

Indoor compact Exciter (up to 3m/10' range). Includes Ethernet interface. Powering options include PoE or external 12VDC power supply (not included).



EX5200 Exciter

EX-5200

Long range LF Exciter (up to 6.5m/21 ft). Includes 24-48VDC input, Ethernet and PoE interface. Does not include power supply. ****COMING SOON****



Tag/Exciter Deployment Device (TED)

TED-1000

Tag/ Exciter Deployment (TED) Tool, a small form factor Tag Activator & Exciter Detector which will be used mainly to configure, initialize, activate, get battery information from Tags, and to measure the coverage/ leakage of Exciters.



Exciter Power Adapters



Exciter PoE Injector 110/220VAC - 48VDC

ADP-030-UK (UK)
ADP-030-U (US)
ADP-030-E (Europe)
ADP-030-J (Japan)
ADP-030-IL (Israel)

PoE Exciter compatible with all Exciters. 110VAC / 220VAC to 48VDC. Recommended power supply when connecting single Exciters. Can also be used for chaining. Outlet connector fit for named region.



EX3210 Power Adapter 25W

ADP-070-UK (UK)
ADP-070-U (USA)
ADP-070-E (Europe)
ADP-070-J (Japan)

EX3200 Exciter 220VAC / 110VAC to 12VDC power adaptor. When chaining Exciters, up to three EX3210 can be powered using this adaptor. Recommended power supply when chaining Exciters.



Exciter EX2000B/EX5200 Power Adapter

ADP-047-UK (UK)
ADP-047-U (USA)
ADP-047-E (Europe)
ADP-047-J (Japan)

AC/DC adaptor 45W 48V/1.0A 90-264VAC.



Exciter Mounting Accessories



Flexible Mounting Bracket For EX2000B

EXAC-100

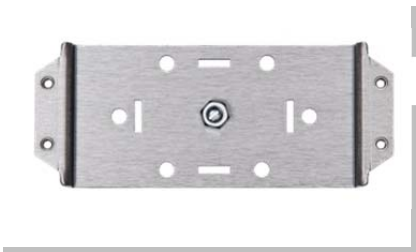
Tilt & Swivel plastic mounting bracket.



EX3210 Exciter Mounting Kit

EXAC-110

Includes mounting plate and ceiling bracket (can be used in cases where default EX3210 mounting lugs are not sufficient).



EX3210 Exciter Mounting Plate

EXAC-120

Includes mounting plate (can be used in cases where default EX3210 mounting lugs are not sufficient).



Exciter Mounting Clip

EXAC-140

EXAC-141 (for EX5200)

Heavy-duty Exciter Mounting Clip. Snaps easily onto the top of the T-Grid of a false ceiling with a standard 61cm (24") span grid. Enables mounting the Exciter using screws.

EXAC-141 includes kit for attaching clip to the EX5200 controller's mounting adaptor.

iCITE10x Pipe Mount Bracket

iCITEMB01

Pipe Mounting Bracket for iCITE10x series of explosion proof exciter.





Hardware Manager Kit

HWM-1000 UK/US/Japan/Europe
TED1000 - Tag Exciter Detector

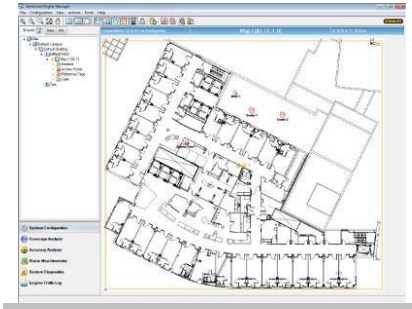
Hardware Manager Kit for configuration of Tags and Exciters. Includes the following products:
LF Exciter Detector (EXD-1000)
Exciter Configuration Cables Kit (EXM-1000)
EX4100 Ultrasound Exciter Configuration Cable (CON-4100)

Software installation file is available for download on the Knowledge Base. A CD with the file is also available and can be shipped with the hardware per demand.



Software

Location Engine



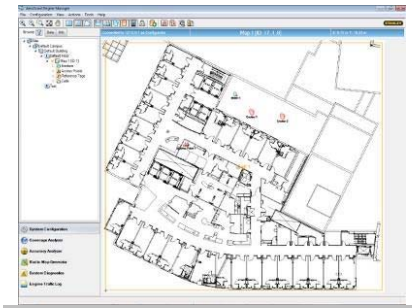
Location Engine License for tracking tags and Wi-Fi devices

ENG-4000: Location Engine for non-Cisco environment

ENG-8000: Location Engine for Cisco environment, MSE version 7.4 or below

ENG-8500: Location Engine for Cisco environment, MSE version 7.5 or above

Location Engine License for tracking tags and Wi-Fi devices.



High Availability License for Secondary Location Engine

ENGHA-2000

For Location Engine High Availability.



MobileView Platform Licenses

nViz Gateway

MV-4000-NGW

Gateway license needed for delivering third party location and telemetry data into MobileView via the nViz gateway. Single license for use with one MobileView server instance.

MobileView High Availability

MVHA-2200

License includes the Esper Event Engine and the Berkeley Database high availability licenses. License also includes any additional gateways that need to be connected to any location source that will be in failover mode (Active-Passive configuration). License does not include any clustering software that may be required for the OS or for the databases. License is perpetual, support & maintenance fee is annual. This SKU includes the support and maintenance fee for the first year only. License entitles customers to install MobileView High Availability on a 2-CPU machine.



MobileView Application Licenses

MobileView Asset Management Solution

MVASMA-1000-L1X	1-199 License
MVASMA-1000-L200	200-499 Licenses
MVASMA-1000-L500	500-999 Licenses
MVASMA-1000-L1K	1,000-2,999 Licenses
MVASMA-1000-L3K	3,000-4,999 Licenses
MVASMA-1000-L5K+	5,000 Licenses and above

MobileView Asset Management software licenses per number of tracked asset units.

MobileView Condition Monitoring Solution

MVCNMO -1000-L1	1-49 Licenses
MVCNMO -1000-L50	50-99 Licenses
MVCNMO -1000-L100	100-199 Licenses
MVCNMO -1000-L200	200-399 Licenses
MVCNMO -1000-L400	400-599 Licenses
MVCNMO -1000-L600	600 Licenses and above

MobileView Condition Monitoring software licenses per number of monitored assets.

MobileView Evacuation Monitoring Solution

MVEVACM-1000-L1	1-99 Licenses
MVEVACM-1000-L100	100-199 Licenses
MVEVACM-1000-L200	200-499 Licenses
MVEVACM-1000-L500	500-999 Licenses
MVEVACM-1000-L1K	1,000-2,999 Licenses
MVEVACM-1000-L3K	3,000-4,999 Licenses
MVEVACM-1000-L5K	5,000-9,999 Licenses
MVEVACM-1000-L10K	10,000-24,999 Licenses
MVEVACM-1000-L25K	25,000-39,999 Licenses
MVEVACM-1000-L40K	40,000 Licenses and above

MobileView Evacuation Monitoring software licenses per number of monitored people. For privacy reasons, this license provides access to location information only during an evacuation. To gain access to personnel location not during an evacuation, order the 'MobileView Worker/People Safety & Visibility Licenses' instead.



MobileView Worker/People Safety & Visibility Licenses

MVWPSV -1000-L1	1-99 Licenses
MVWPSV -1000-L100	100-199 Licenses
MVWPSV -1000-L200	200-499 Licenses
MVWPSV -1000-L500	500-999 Licenses
MVWPSV -1000-L1k	1000-2,999 Licenses
MVWPSV -1000-L3k	3,000-4,999 Licenses
MVWPSV -1000-L5k	5,000-9,999 Licenses
MVWPSV -1000-L10k	10,000-24,999 Licenses
MVWPSV -1000-L25k	25,000-39,999 Licenses
MVWPSV -1000-L40k	40,000 plus Licenses

MobileView Worker/People Safety & Visibility Software License per number of workers.

(Includes generic personnel tracking via asset management application, Evacuation Monitoring application, check-in/ out application, worker duress, personnel Locator, reports and alerts).

MobileView for Passive RFID Licenses

MVPVR-1000-L1000	1,000 License Pack
MVPVR-1000-L2500	2,500 License Pack
MVPVR-1000-L5000	5,000 License Pack
MVPVR-1000-L10000	10,000 License Pack
MVPVR-1000-L20000	20,000 License Pack

MobileView Passive RFID software license packs per number of tracked assets.

MobileView Instant Notifier Licenses

INF-1000-10	10 License Pack
INF-1000-50	50 License Pack
INF-1000-SITE	Unlimited License Pack

Application and licenses for displaying MobileView alert messages on PCs and supported mobile devices. The client includes visual and audible indication, dynamic map display and alert management panel. Includes license for 10 concurrent users of the application (any combination of PC and mobile up to 10 devices is supported). Includes 2 hours of remote installation support and training.



Evaluation and Development Kits

Basic Packages

System Evaluation and Development Kit

EDK-6600-U

EDK-6600-UTR (three day training course for System Evaluation and Development Kit, for up to 3 participants)

Includes:

- 1- EX2000B Exciter and mount and power adapter
- 1 - EX3210 Exciter and mount and power adapter
- 2 - T2 Extended Battery Industrial Tags
- 1 - T2sTag with call button and asset cradle
- 1 - T12 Tag with call button and cradle
- 2 - T3 Tags
- 1 - T5a Temperature Tag
- 1 - T5h Humidity Tag
- 2 - T5a and T5h Tag Battery
- 1- T12 Tag Battery (CR-123A)
- AeroScout Location Engine
- MobileView Asset Management for 10 assets
- MobileView Condition Monitoring for 3 assets
- MobileView Evacuation Monitoring for 3 assets
- Instant Notifier
- 2 years maintenance

Hardware Manager Kit

Not for commercial/production usage. Does not include server or services. It is strongly recommended that a training package such as EDK-6600-UTR is purchased alongside the EDK-6600-U kit.

MobileView Test Server License

MVS-4000-TSV

License for MobileView software to run in a test/integration environment. This license CANNOT be used for production.

Lenel OnGuard integration

INT-LNL-100

Integration between MobileView and Lenel OnGuard security system



IP Relays

IP Relay MobileView Adaptor

INT-RLY-1000

Software component to allow MobileView events to trigger IP relay unit (RLY-1006)



IP Relay

RLY-1006 (ADAM 6066 : 250VAC@5A, 30VDC @3A output)

IP relay unit that can control up to 6 peripherals, for instance, Siren with strobe light (SKU: SRN-1000). Power supply included. Requires integration software for MobileView (SKU: INT-RLY1000).



Revision control

Document Number **414933, version 3.0**

© This document is copyright Extronics Limited 2015.

Extronics reserve the right to change this document and its content without notice. The latest version applies.

